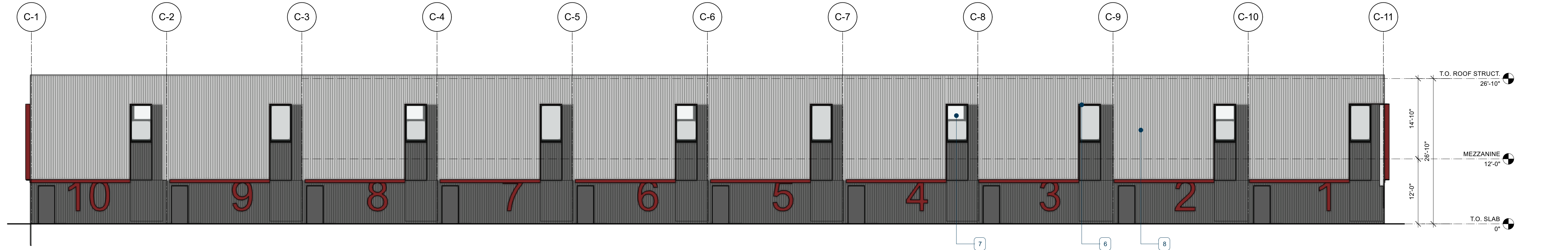
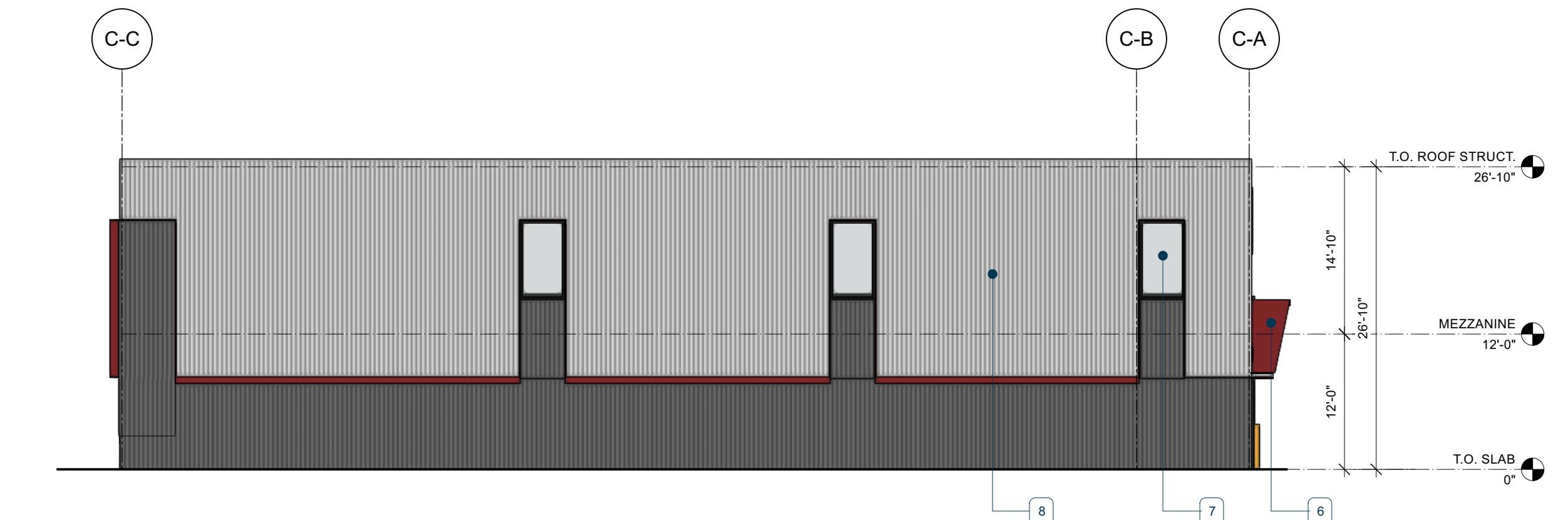


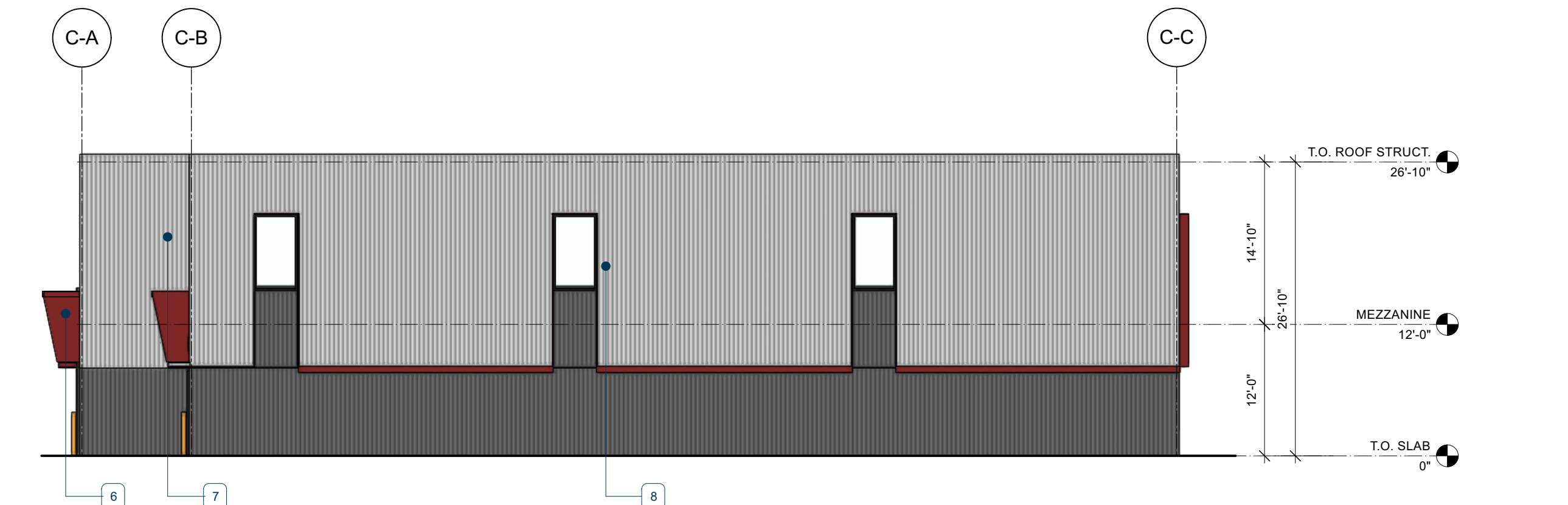
**1 BLDG C - SOUTH ELEVATION**  
Scale: 3/32" = 1'-0"



**2 BLDG C - NORTH ELEVATION**  
Scale: 3/32" = 1'-0"



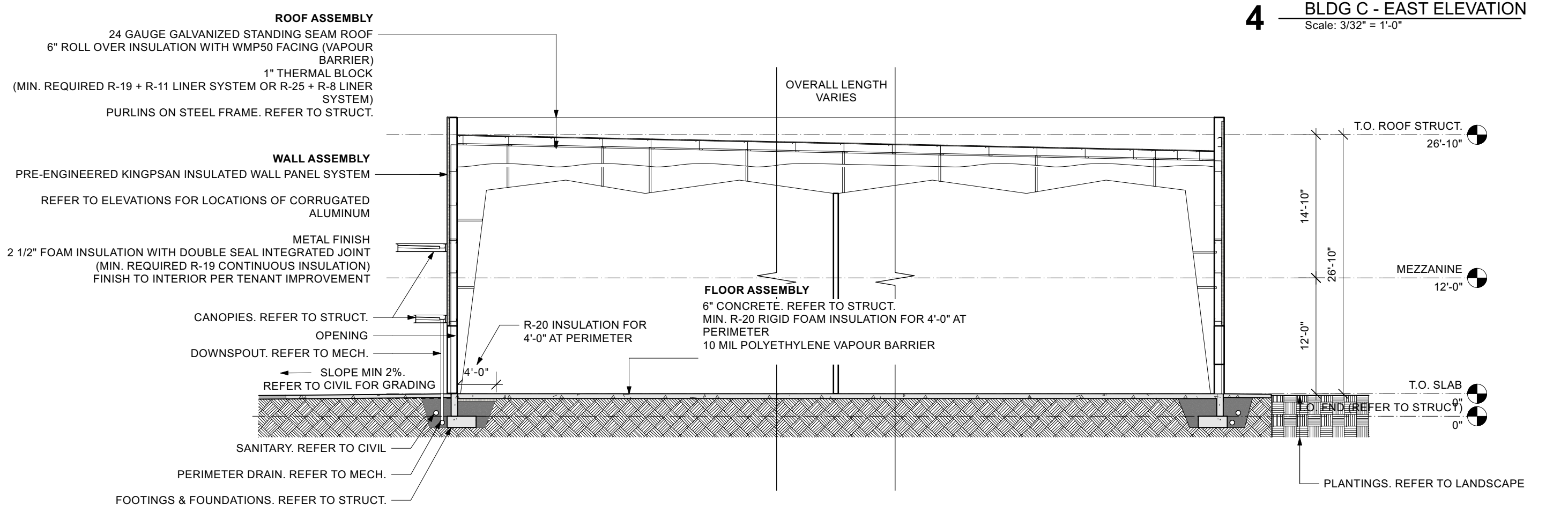
**3 BLDG C - WEST ELEVATION**  
Scale: 3/32" = 1'-0"



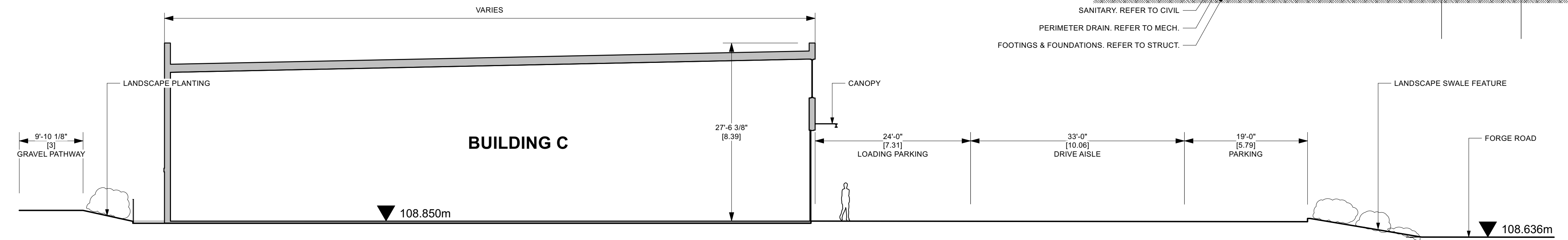
**4 BLDG C - EAST ELEVATION**  
Scale: 3/32" = 1'-0"

**MATERIAL LEGEND**

1. STOREFRONT OR CURTAIN WALL ENTRY DOOR WITH SIDELIGHT, CHARCOAL
2. STEEL ROLL UP OVERHEAD DOOR, CHARCOAL
3. SUITE SIGNAGE, BACK-LIT OR WITH LIGHT OVER
4. DOWNPIPE, GALVANIZED
5. PRE-ENGINEERED INSULATED METAL PANELS; DARK
6. STEEL C-CHANNEL CANOPY WITH COVER
7. STOREFRONT OR CURTAIN WALL GLAZING UNIT, CHARCOAL
8. PRE-ENGINEERED INSULATED METAL PANELS; LIGHT



**5 TYPICAL SECTION EAST-WEST**  
Scale: 3/32" = 1'-0"



**6 BUILDING C - SITE SECTION**  
Scale: 3/32" = 1'-0"

4300 Forge Road

RECEIVED  
DP1346  
2024-JUL-08  
Current Planning